



# LINEAR HIGH BAY

Specifically designed for aisles & shelves' lighting in warehouses



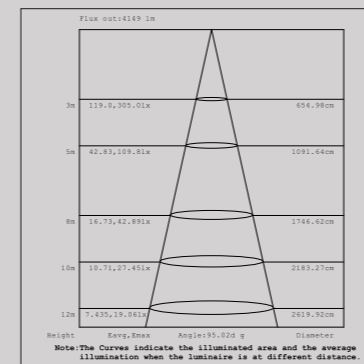
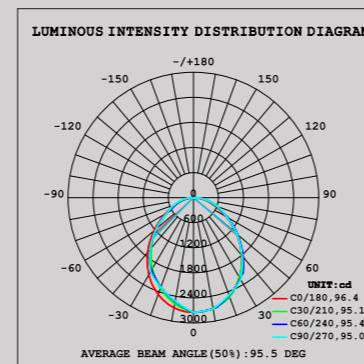
IP54  
FIVE-YEAR  
**5**  
WARRANTY

Shenzhen XinShengYang Opto-electronics Technology Co.,Ltd

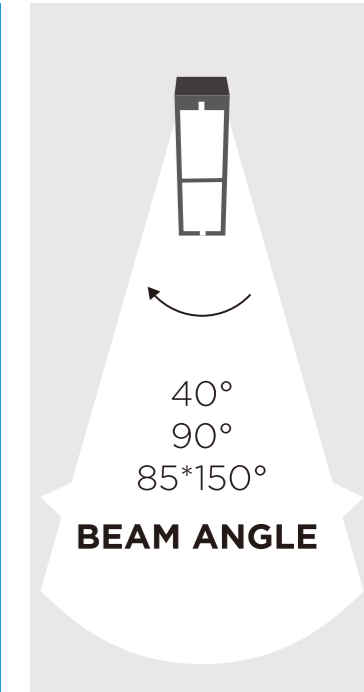
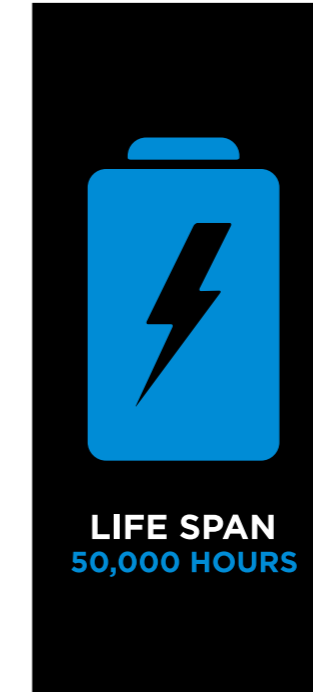
## Parameters

Items	Parameter
Nominal wattage	50 / 100 / 130 / 165 / 50*2 / 100*2 / 130*2 / 130*2
Luminous flux	130lm / W
Led chip	Original Nichia chips
IP rated	Ip54
Beam angle	40°, 90° / 85*150°
Input voltage	AC100-277V, 50-60hz
CCT	4000-5700K
Ra	>70
P.F.	>0.95
Materials	6063 Extrusion Aluminum +PC Lens
Certificate	ETL
Installation	Suspended / Ceiling Mounted/ Parallel Combination
Frequency	50Hz-60Hz
Led model	Original Nichia 3030
Driver	Meanwell Driver
Lifespan	50,000 Hours

## Photometric Diagrams



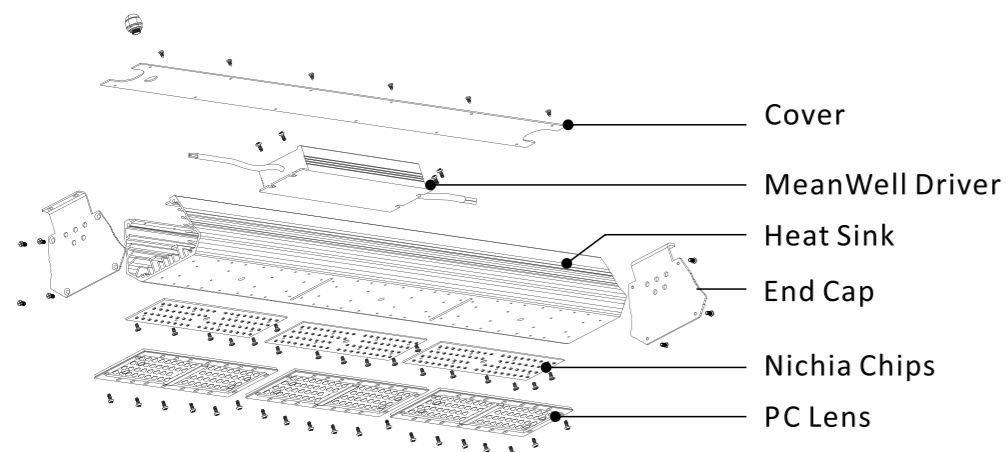
## Feature



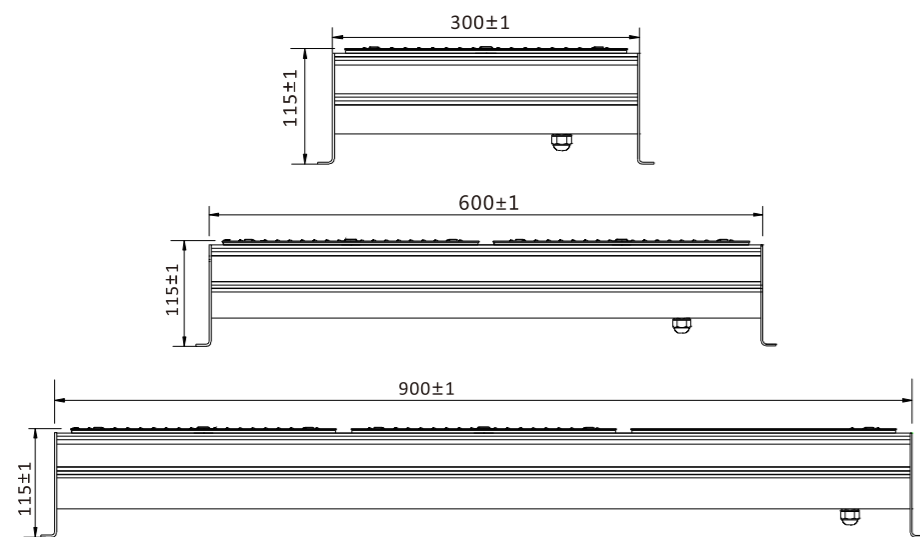
★ Well adapt to the aisles & shelves' scenario in warehouses, from the perspectives of appearance, installation and beam angle. Improve the lighting effects while saving the room.

★ workplane、docking areas. 40° and 90° beam angle optional, widely used in aisles, workshop and docking areas.

## Explosive View

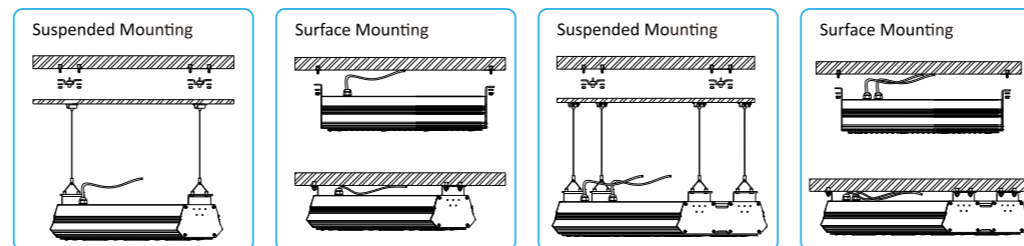


## Dimension Diagram

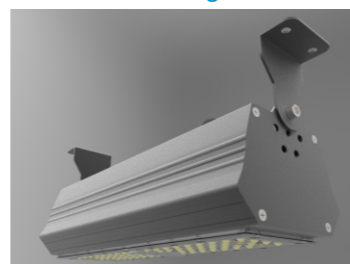


## Installation Instruction

Optional suspension and ceiling mounting installation ways, easily adapt to usage scenario in different height and saving the room.



Surface Mounting



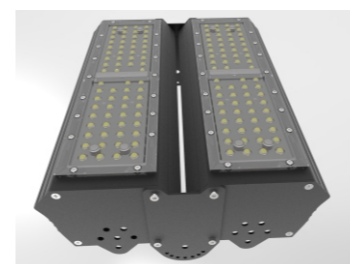
U Bracket Mounting



Suspended Mounting

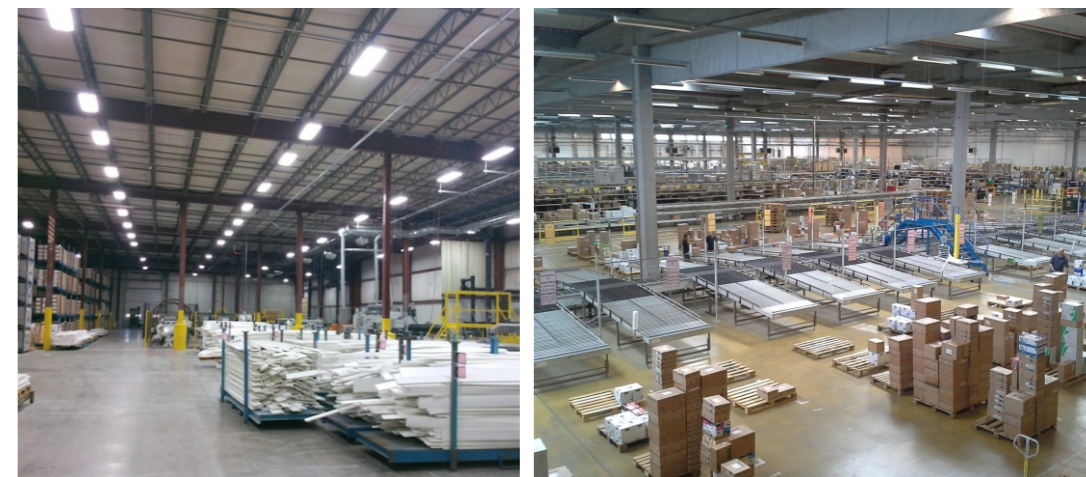


Parallel combination Installation



High efficacy up to 130lm/w, saving much energy compared with traditional metal halide high bay lights. Free combination function allows to flexibly adjust its power, shape and size.

## Application



### Product Positioning

Due to the humanized design of linear high bay, it is widely used in warehouse aisles, workshops and docking areas.

